

**To:** Outback S-Lite™ Owners  
**From:** Technical Support, Ground Ag  
**Date:** March 23, 2013  
**Subject:** Application ver. 1.60 Upgrade Loading Instructions

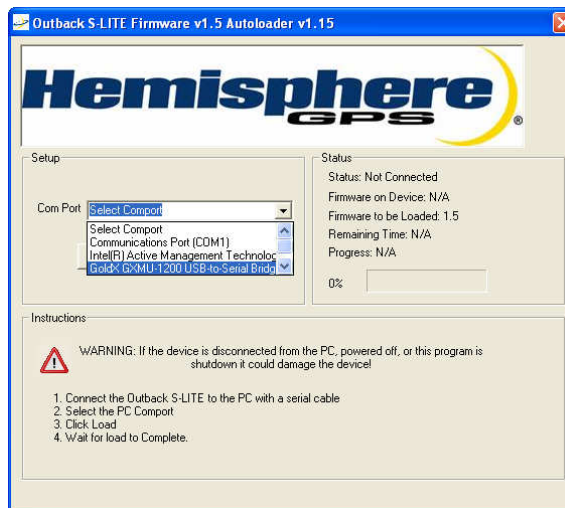
**Product Affected:** Outback S-Lite v1.60

**Scope:** This service bulletin provides instructions for loading Outback S-Lite application software v1.60.

**Description of Changes:** Improved GNSS Serial Number Entry

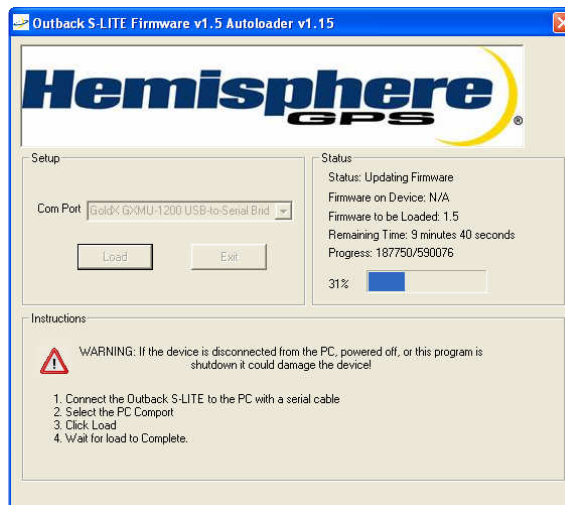
**Instructions:**

- Step 1** Download the "Autoloader\_SLite\_160" software update to your computer.  
**or**  
If you have received the software update from Outback Customer Service save it to your computer.
- Step 2** Press and hold the Down Arrow button while powering up the S-Lite.
- Step 3** If the S-Lite unit shows *Loading S2 1.4*, **STOP**, turn off the unit and contact Outback Customer Service.  
If the S-Lite unit shows *Loading S-Lite 1.4*, turn off the unit and proceed with Step 4.
- Step 4** Power up the Outback S-Lite and connect the Outback S-Lite to your computer with a serial cable.
- Step 5** Open the Autoloader file and select your serial port from the **Com Port** list.



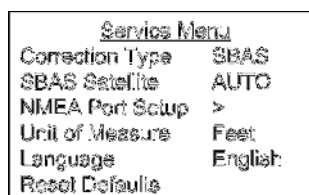
**Step 6** Click **Load**.

**Step 7** Wait for the load to complete. The Status area displays percent of the load complete and time remaining (install time is approximately 10 - 15 minutes).



**Step 8** The Outback S-Lite will automatically reboot after loading is complete. Ensure the load has taken effect by checking the software version on the console.

**Step 9** Before beginning a new job, select "Reset Defaults" from the Service menu.



**Note:** Refer to the “Configuring the System” section in Chapter 2 of the S-Lite User Guide for more information on the Service menu.

**The update is complete.**