

FIG. 3201 FRONT IDLER

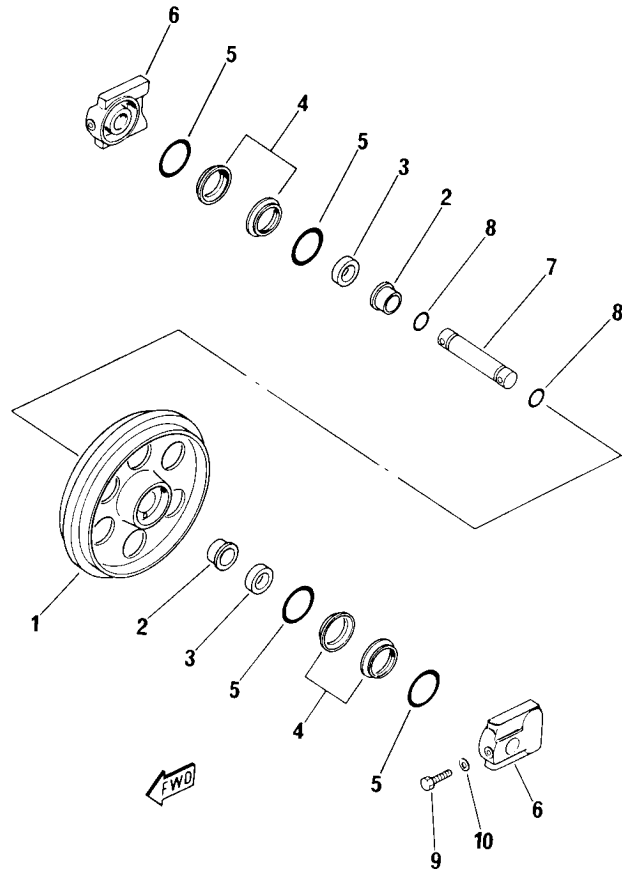


FIG. N° .3201

INDEX N°.	PART N°.	DESCRIPTION	Q.TY	SERIAL N°.
—	20W-30-R2001	IDLER ASSY.	2	F10001 -
1	20M-30-R2011	IDLER	1	F10001 -
2	20M-30-R2031	BUSHING	2	F10001 -
3	20M-30-11140	COLLAR	2	F10001 -
4	110-30-R2121	FLOAT. SEAL ASSY.	2	F10001 -
5	110-30-R2051	SEAL RING ASSY.	2	F10001 -
6	110-30-R2041	O-RING	2	F10001 -
7	20M-30-11150	SUPPORT	2	F10001 -
8	20M-30-31121	SHAFT	1	F10001 -
9	PZF855021812	O-RING	2	F10001 -
10	01090-50840	BOLT	2	F10001 -
11	01643-30823	WASHER	2	F10001 -

FIG. 3211 RECOIL SPRING (FOR STEEL TRACK SHOE)

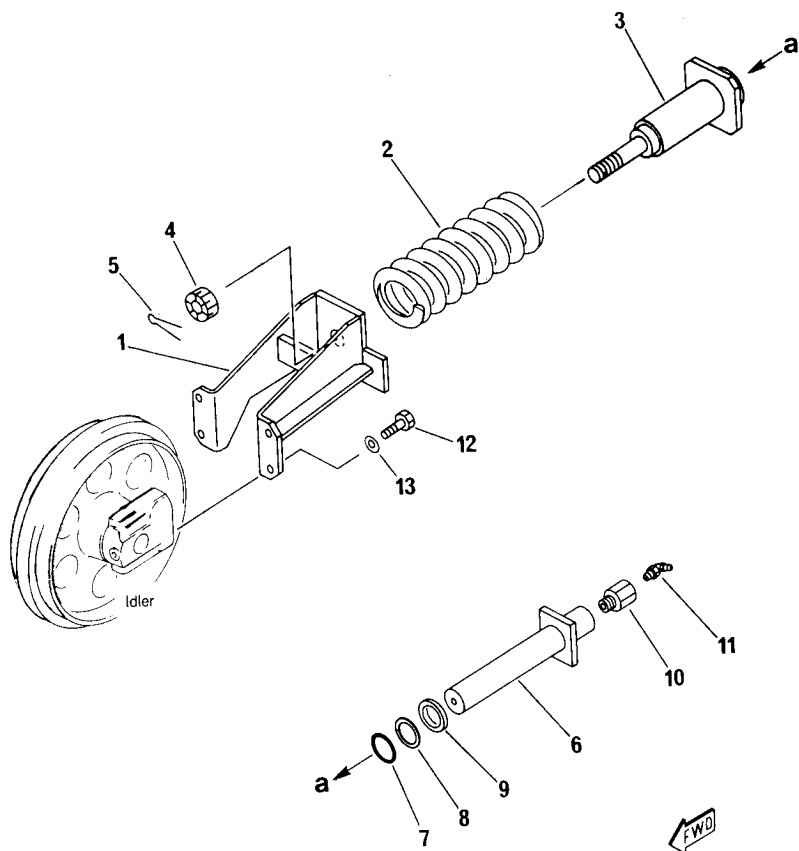


FIG. N° :3211

INDEX N°.	PART N°.	DESCRIPTION	Q.TY	SERIAL N°.
1	20W-30-13110	BRACKET	2	F10001 -
2	20M-30-11330	SPRING, RECOIL	2	F10001 -
3	20W-30-13121	CYLINDER	2	F10001 -
4	PZF801802218	NUT	2	F10001 -
5	PZF802610072	PIN, COTTER	2	F10001 -
6	20M-30-31231	ROD	2	F10001 -
7	PZF855021217	O-RING	2	F10001 -
8	PZF855080217	RING, BACK-UP	2	F10001 -
9	20M-30-31250	SEAL, DUST	2	F10001 -
10	20M-30-31240	VALVE	2	F10001 -
11	PZF860020005	FITTING, GREASE	2	F10001 -
12	01010-51025	BOLT	8	F10001 -
13	01643-31032	WASHER	8	F10001 -

FIG. 3212 RECOIL SPRING (FOR RUBBER SHOE)

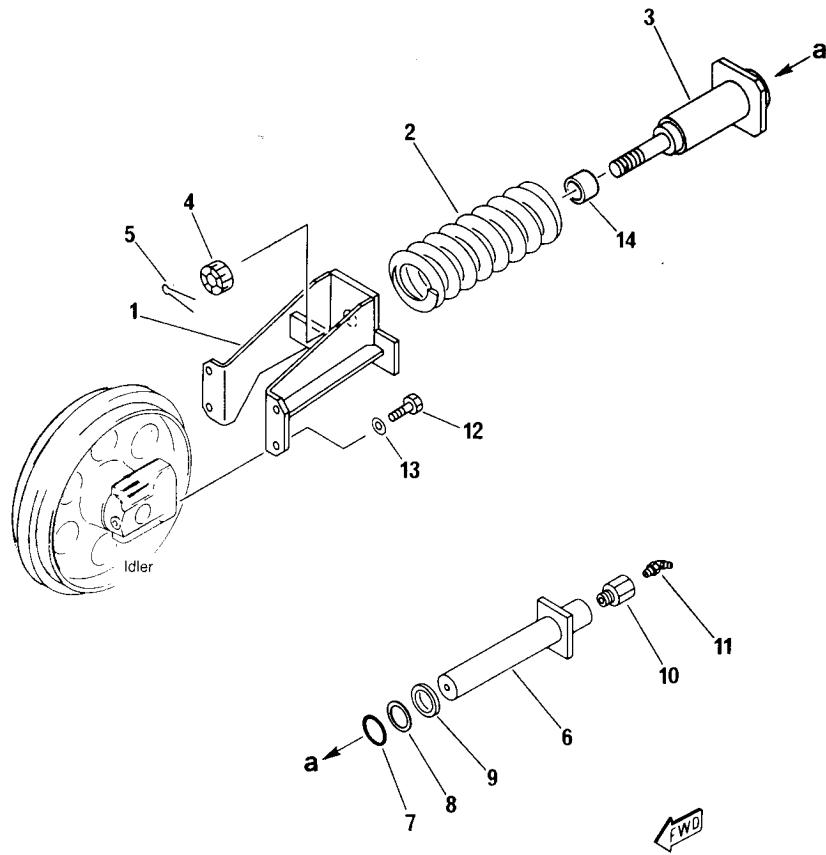


FIG. N° :3212

INDEX N°.	PART N°.	DESCRIPTION	Q.TY	SERIAL N° . PC05-6F
1	20W-30-13110	BRACKET	2	F10001 -
2	20M-30-11330	SPRING, RECOIL	2	F10001 -
3	20W-30-13121	CYLINDER	2	F10001 -
4	PZF801802218	NUT	2	F10001 -
5	PZF802610072	PIN, COTTER	2	F10001 -
6	20M-30-31231	ROD	2	F10001 -
7	PZF855021217	O-RING	2	F10001 -
8	PZF855080217	RING, BACK-UP	2	F10001 -
9	20M-30-31250	SEAL, DUST	2	F10001 -
10	20M-30-31240	VALVE	2	F10001 -
11	PZF860020005	FITTING, GREASE	2	F10001 -
12	01010-51025	BOLT	8	F10001 -
13	01643-31032	WASHER	8	F10001 -
14	20W-35-15120	SPACER	2	F10001 -

FIG. 3301 TRACK ROLLER

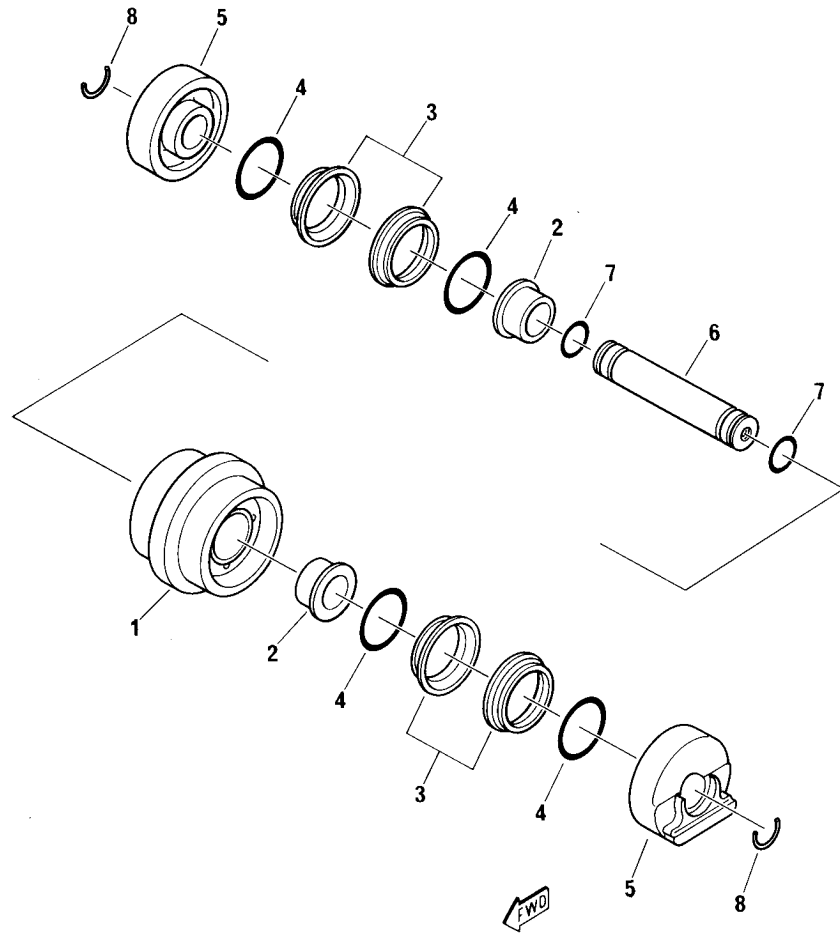


FIG. N° :3301

INDEX N°.	PART N°.	DESCRIPTION	Q.TY	SERIAL N° PC05-6F
—	20M-30-31301	TRACK ROLLER ASSY.	6	F10001 -
1	20M-30-31310	. ROLLER	1	F10001 -
2	20M-30-31130	. BUSHING	2	F10001 -
	110-30-R2121	. FLOAT. SEAL ASSY.	2	F10001 -
3	110-30-R2051	. SEAL RING ASSY.	2	F10001 -
4	110-30-R2041	. O-RING	2	F10001 -
5	20M-30-31530	. COLLAR	2	F10001 -
6	20M-30-31321	. SHAFT	1	F10001 -
7	PZF855021812	. O-RING	2	F10001 -
8	20R-30-11270	. RING, SNAP	2	F10001 -